

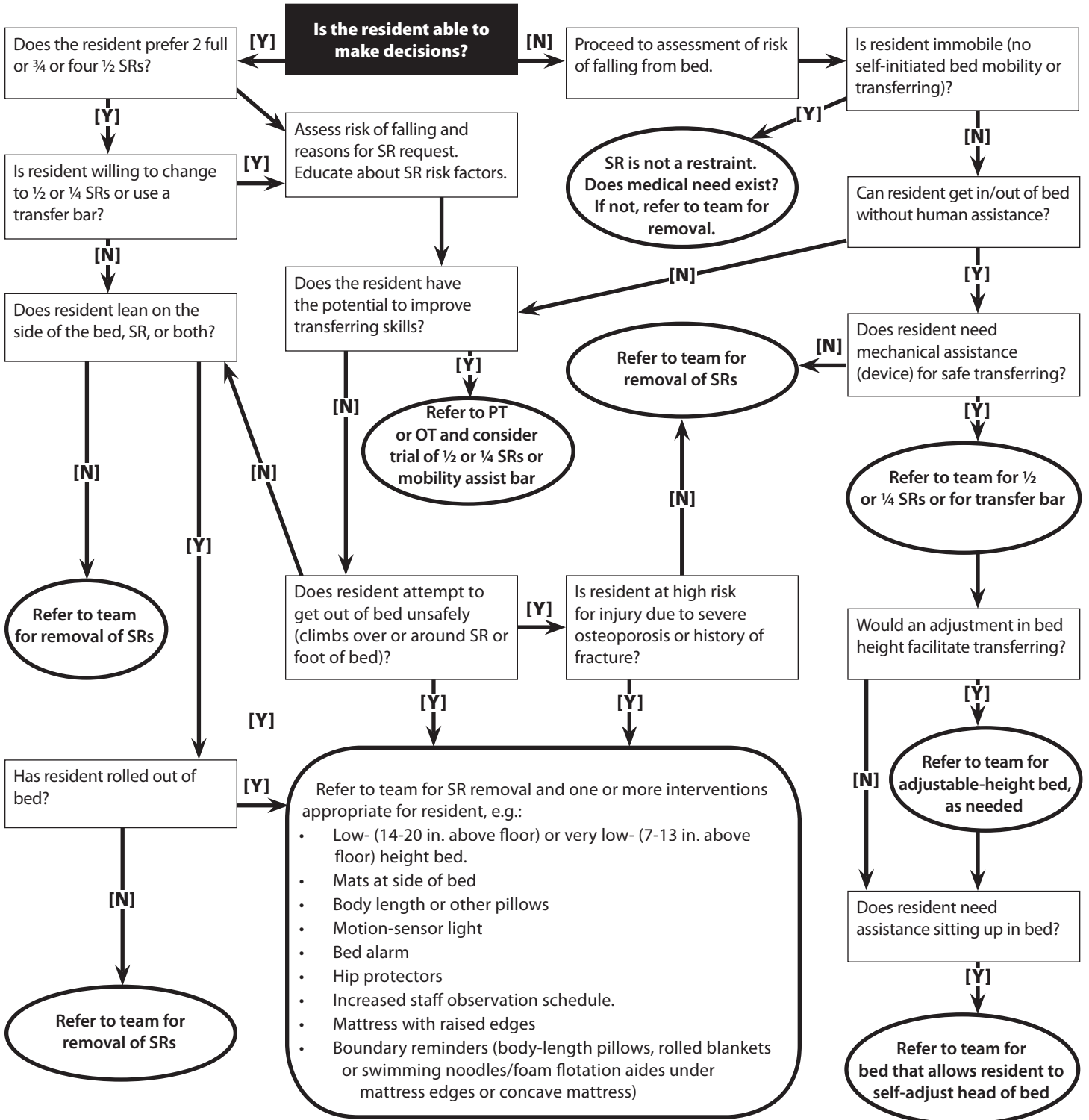
Restraints: Side Rail or Alternative Intervention Decision Tree

Use this decision tree to determine if a side rail is a restraint or if there are alternatives to its use.

Key: [Y] = Yes [N] = No SR = side rail

"Team" refers to a decision-making person or group as specified by the institution. It could consist of a multidisciplinary restraint reduction team, a geriatric consultation team, the rehabilitation department, a nurse manager or supervisor, or a gerontologic advanced practice nurse.

Resident Name: _____ Date: _____



Document available at www.primaris.org